

FABRICS & FINISHES







FABRICS

Our collection comes in a vast choice of standard fabrics in five different price categories as well as PU leatherettes with natural leather grain, matching to the most diverse fields of application: from open office environments to public waiting areas such as airports, multi-purpose breakout areas, business lounges, hotel lobbies or food and beverage outlets and other informal locations. If you prefer your own fabric, Conceptual will be happy to advise you.



FABRIC CATEGORIES

CATEGORY 1

NAME	SOIL	PUCO	SMOOTH	URBAN	VELOURS	DEKORA
Brand Composition Abrasion Weight Flammability Certificates	Private label 60% RPET - 40% P 100.000 530 g/m2 BS5852 1979 1	Private label 65% PU - 30% P - 5% C 200.000 520 g/m2	Private label 100% P 100.000 491 g/m2 BS5852 1979	Private label 100% P 100.000 497 g/m2 BS5852 1979	Private label 100% P 88.000 580 g/m2 BS5852 1979	Private label 100% PL 100.000 250 g/m2 BS5852 1979 1

CATEGORY 2

NAME	ERA	MEDLEY	TONAL	ROCCIA	RELATE	FACET
Brand Composition Abrasion Weight Flammability Certificates	Camira 100% P 100.000 320 g/m2 EN 1021 1-2 1	Gabriel 100% P 75.000 510 g/m2 EN 1021 1-2 1	Gabriel 99% RP - 1% P 100.000 315 g/m2 EN 1021 1-2 1 2	Fidivi 100% TCS 70.000 350 g/m2 B1 1 2 4	Kvadrat 100% TCS 80.000 450 g/m2 EN 1021 1-2 2 4 5	Textaafoam 75% W - 25% PA 100.000 600 g/m2 EN 1021 1-2

• The Trevira CS certified range KING FLEX (170cm width) from Fidivi is also available in category 2.

CATEGORY 3

NAME	VALENCIA	STEP / MELANGE	GO CHECK	MAIN LINE FLAX	FABRIXX WOOL	NOMA
Brand Composition Abrasion Weight Flammability Certificates	Vyva fabrix 100% V 300.000 650 g/m2 EN 1021 1-2	Gabriel 100% TCS 100.000 470 g/m2 B1 1 2 4	Gabriel 100% TCS 80.000 435 g/m2 B1 1 2 3 4	Camira 70% VW - 30% F 50.000 437 g/m2 B2 1	Oniro 75% W - 25% PA 50.000 500 g/m2 EN 1021 1-2	Gabriel 50% RP - 50% P 60.000 440 g/m2 B1 1

CATEGORY 4

NAME	PUXX	PATINA	SYNGERGY	FLOYD	BLAZER	REMIX
Brand	Oniro	Camira	Camira	Kvadrat	Camira	Kvadrat
Composition	100% PU	69% W - 22% F - 8% PA - 1% VC	95% VW - 5% PA	50% P - 45% W - 5% P	100% VW	90% VW - 10% N
Abrasion	300.000	100.000	100.000	50.000	50.000	100.000
Weight	520 g/m2	330 g/m2	440 g/m2	370 g/m2	460 g/m2	415 g/m2
Flammability	EN 1021 1-2	EN 1021 1-2	EN 1021 1-2	EN 1021 1-2	EN 1021 1-2	EN 1021 1-2
Certificates	1	2	1 2	5	2	2 5

CATEGORY 5

NAME	RE-WOOL	BREEZE FUSION	STEELCUT TRIO	LILA	HALLINGDAL	RAAS
Brand	Kvadrat	Gabriel	Kvadrat	Kvadrat	Kvadrat	Kvadrat
Composition	45% RW - 45% VW - 10% N	88% W - 12% PA	90% VW - 10% N	92% VW - 8% N	70% VW - 30% VC	92% VW - 8% N
Abrasion	50.000	100.000	100.000	100.000	100.000	100.000
Weight	540 g/m2	590 g/m2	770 g/m2	755 g/m2	795 g/m2	770 g/m2
Flammability	EN 1021 1-2	EN 1021 1-2	EN 1021 1-2	EN 1021 1-2	EN 1021 1-2	EN 1021 1-2
Certificates	2 5	1 2	2 5	2 5	2 5	2 5

CERTIFICATES

1



2



3



4



5



COMPOSITION LEGEND

- C = cotton
- F = flax
- N = nylon
- P = polyester
- PA = polyamide
- PL = polyolefin
- PU = polyurethane
- RP = recycled polyester
- RW = recycled wool
- TCS = trevira CS
- V = vinyl
- VC = viscose
- VW = virgina wool
- W = wool



OUR FINISHES

All our fabrics, veneers, laminates and coatings have been carefully adopted to ensure a wide selection of colours, textures and detailed specifications for better use in commercial, hospitality, residential, educational and healthcare interior environments.

With an eco-drive ambition, our fabric and wood collections are environmentally sustainable, with high FR standards and abrasion results of the fabrics for safety and durability.

At CONCEPTUAL, the philosophy is to ensure that our furniture adapts to every environment and every style. It is by this motion, that our fabrics and other materials have been selected, providing solutions for all contemporary design requirements.



MELAMINE

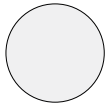
- Coffee & Side table tops
- Column table tops
- YOYO laptop table tops



natural oak
Kronospan K358 PW



white wash oak
Kronospan K017 PW



white
Kronospan 8100 SM

LACQUERED VENEER

- Coffee & Side table tops
- Column table tops
- ELEMENTS covers



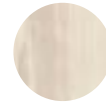
natural oak
veneer

MULTIPLEX HPL

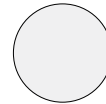
- Coffee & Side table tops
- Column table tops
- Integrated table tops
- MUSHROOM table tops



natural oak
Kronospan K358 PW



white wash oak
Kronospan K017 PW



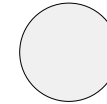
white
Kronospan 8100 SM

FENIX

- Coffee & Side table tops
- Column table tops
- Integrated table tops
- MUSHROOM table tops
- YOYO laptop table tops



fenix black



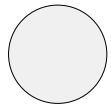
fenix white

POWDER COATING
(standard)

- MEDIAWALL base
- Coffee & Side table bases
- Column table bases
- Chair bases



black
RAL9005



white
RAL9010

POWDER COATING
(on request)

- Feet CLARK range
- Feet S-TUDIO range
- Cross base Coffee tables
- Sledge base chairs



azure blue
RAL 5009



purple red
RAL 3004



broom yellow
RAL 1032



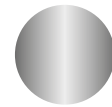
pale green
RAL 6021

GLOSS FINISH
(standard)

- Coffee & Side table bases
- Chair bases



polished
aluminium



chrome
plated

SOLID WOOD

- Feet CLARK range
- Wood base Coffee & Side tables
- Wood base chairs



natural oak
(feet CLARK)



natural ash wood
(wood base chairs, coffee
and sidetables.)